

RFP for Suspended Sculpture – Dayton Convention Center

Issued by The Art Company, consultant for the:
The Montgomery County Convention Facilities Authority

Issue Date October 4, 2024

Responses Due By October 25, 2024

Suspended Sculpture Project

Location Dayton, Ohio

Installation March 2025

Background on Dayton

Dayton, Ohio is a thriving community with a diverse population. Dayton is the Birthplace of Flight and Funk. Known as the Gem City, Dayton has a long history of innovation, with notable innovators including the Wright Brothers. Dayton is located at the convergence of Five Rivers and part of the Great Miami Riverway.

Dayton is home to Wright Patterson Air Force Base, which houses the National Museum for the United States Air Force. Dayton was the center of the Bosnian Peace Agreement in 1995 (Dayton Accords) which ended the war in Bosnia.

Dayton has a rich cultural scene with the Dayton Philharmonic Orchestra, Dayton Ballet, Dayton Contemporary Arts Center, Dayton Opera, Dayton Live Performing Arts, and a world-class art collection at the Dayton Art Institute.

Building Particulars

The Dayton Convention Center is a public venue that hosts conventions, meetings, and competitions for local, regional, and national organizations.

Particulars for the suspended sculpture

The sculpture will be located inside the main entrance on the north side of the convention center. The lobby area is a three-story atrium space with views from each floor. A large skylight above the central part of the lobby adds natural daylight to the space.

The sculpture should capture the essence of Dayton's rich history. It may capture a sense of flight with a nod to the Birthplace of Flight or water to showcase the convergence of the Five Rivers.

The presentation should include basic mounting requirements. The ideal installation will be from the soffit between the skylight and the acoustical panel ceiling. These particulars will be further discussed with the winning commission.

The sculpture should be fabricated with durable, low-maintenance materials. Artists should provide an estimated weight and structural engineering instructions for the appropriate installation structure.

Visibility

The sculpture will be visible from all the convention center floors. Especially visible from the ground floor and the escalators going from the second floor to the ground and from the third floor back to the second floor. There are places on all floors to see the sculpture. There is an outdoor balcony space above the front doors which will have a view of the sculpture as well.

Budget

The budget for this sculpture is \$75,000- \$90,000*

*The budget covers design, fabrication, structural engineering to determine installation requirements, and artist's fees.

The **client** will provide rigging for the sculpture

The **artist** will arrange the delivery of the sculpture to the site.

Please let us know your interest by October 10, 2024

We want to move this project quickly, we would like to receive your design concept by October 25, 2024

Once submitted, the committee will make the decision and the commission will be awarded to the sculptor who meets the criteria and budget.



skylight



Soffit



12'



4'



8'6"



4'



8'9"



EXHIBIT HALL



28'

8'

9'

EXIT

EXIT

Wessi

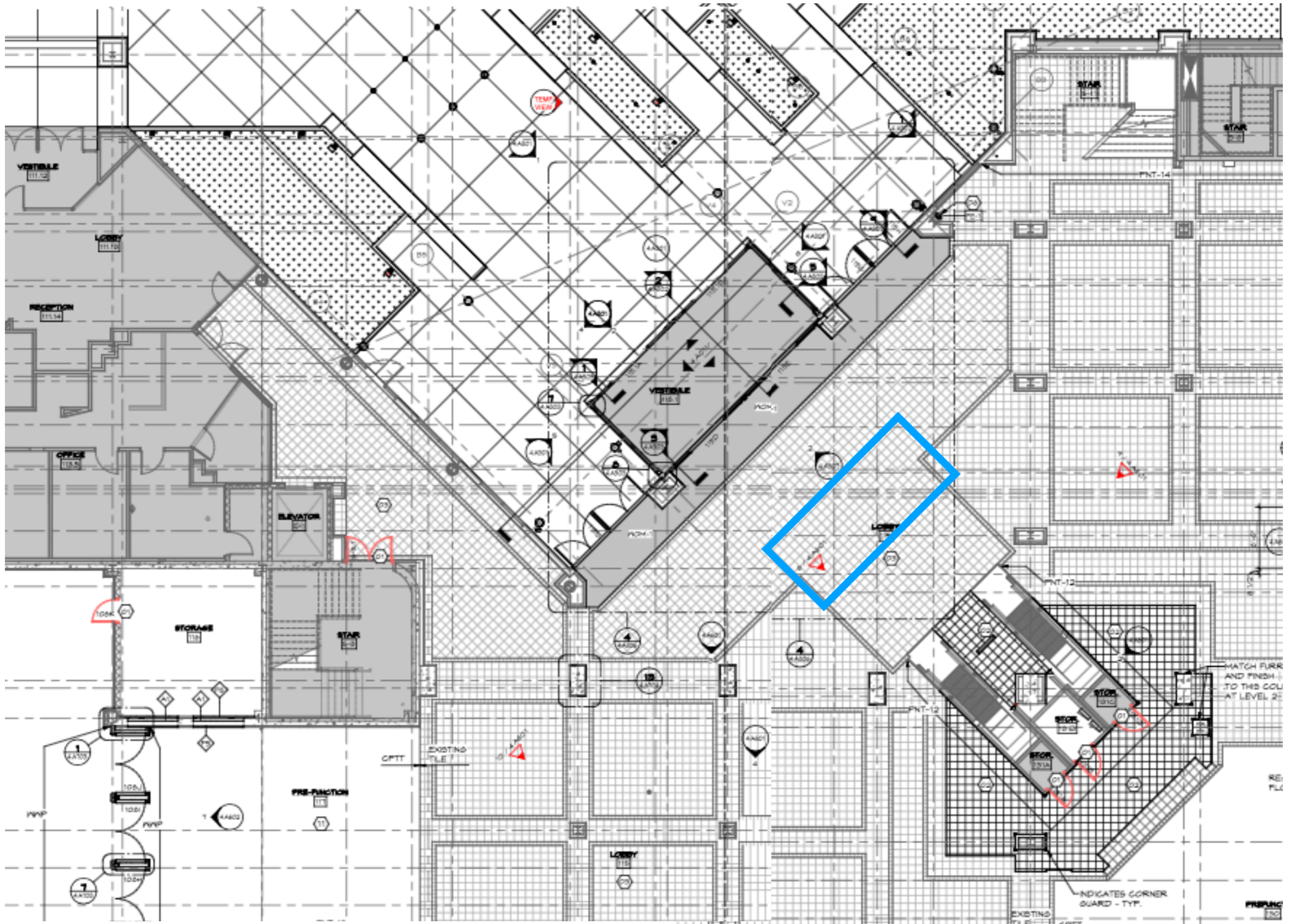


approximate location of suspended sculpture



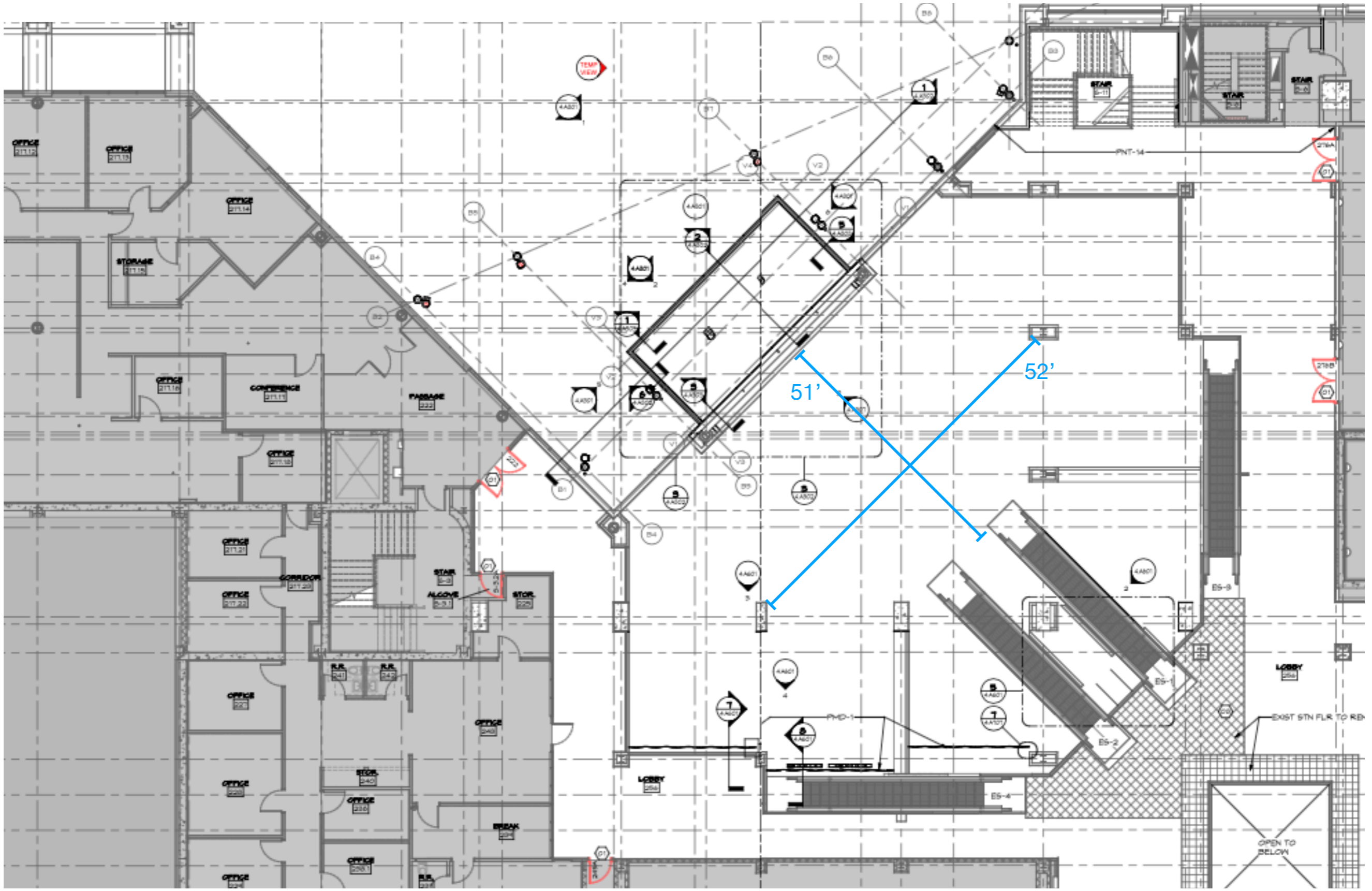


Original rendering, there have been changes to the interior and the sculpture shown is a placeholder, not intended for the style

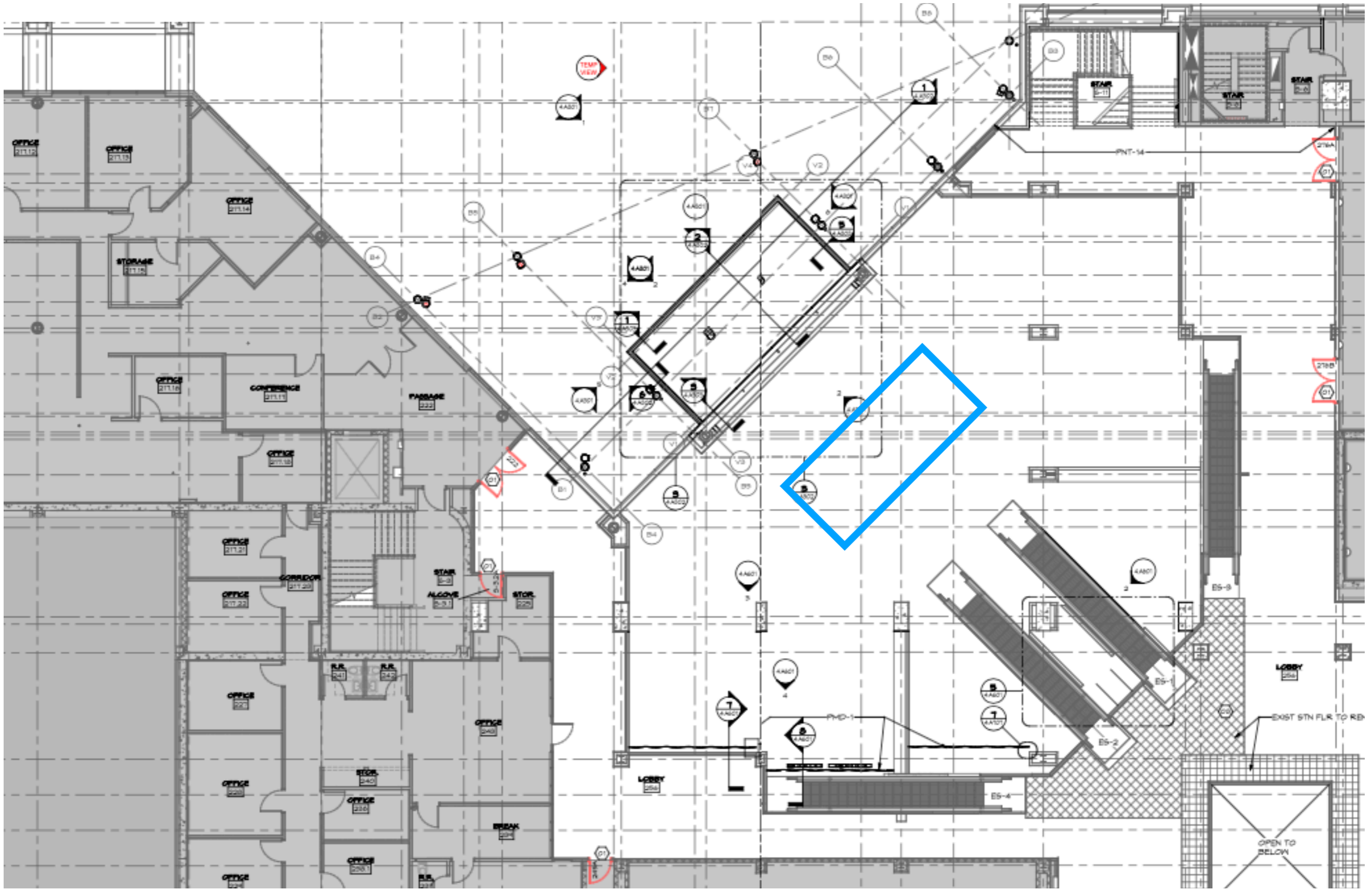


Ground floor

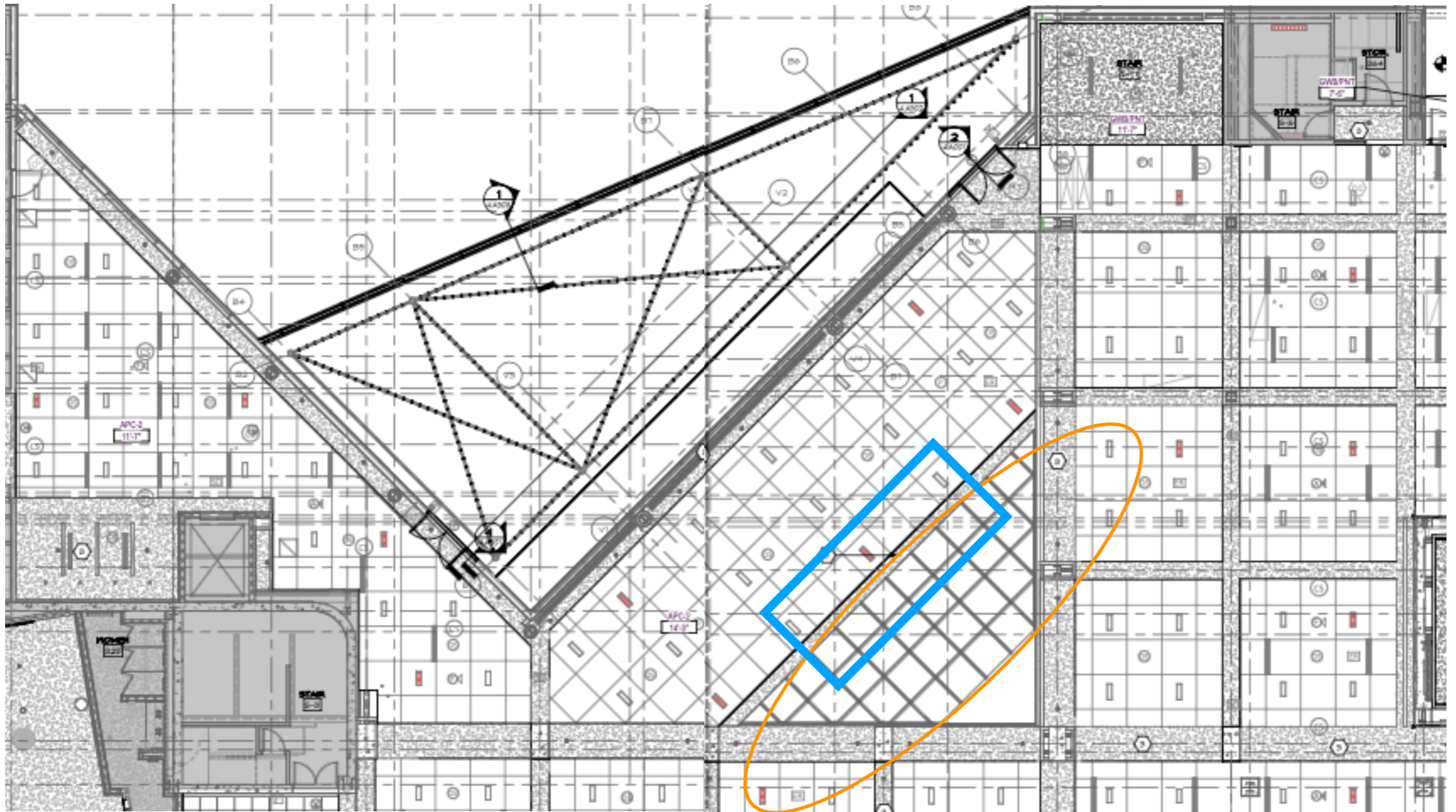
Approximate location of suspended sculpture



Second floor



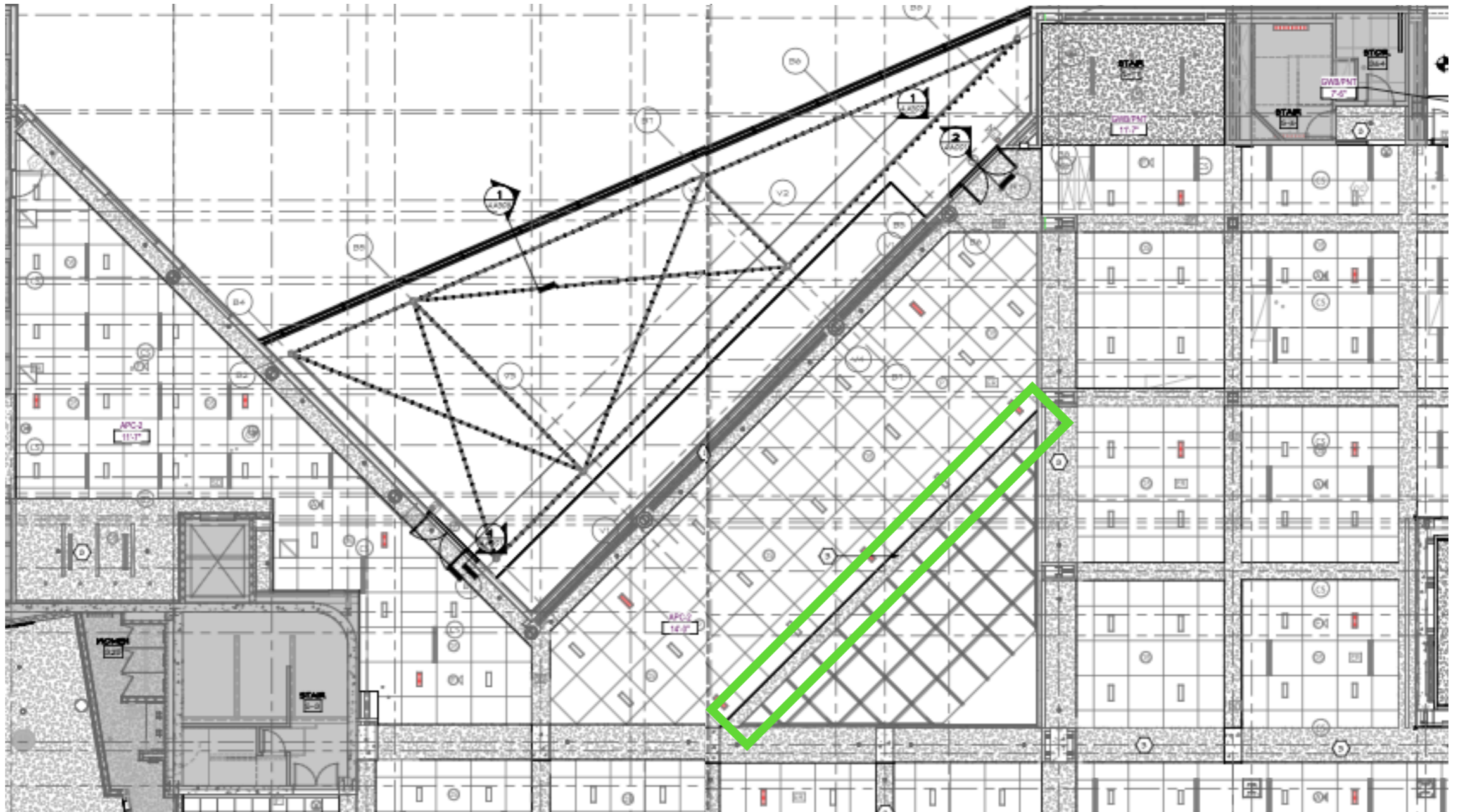
approximate location of suspended sculpture



Approximate location of suspended sculpture

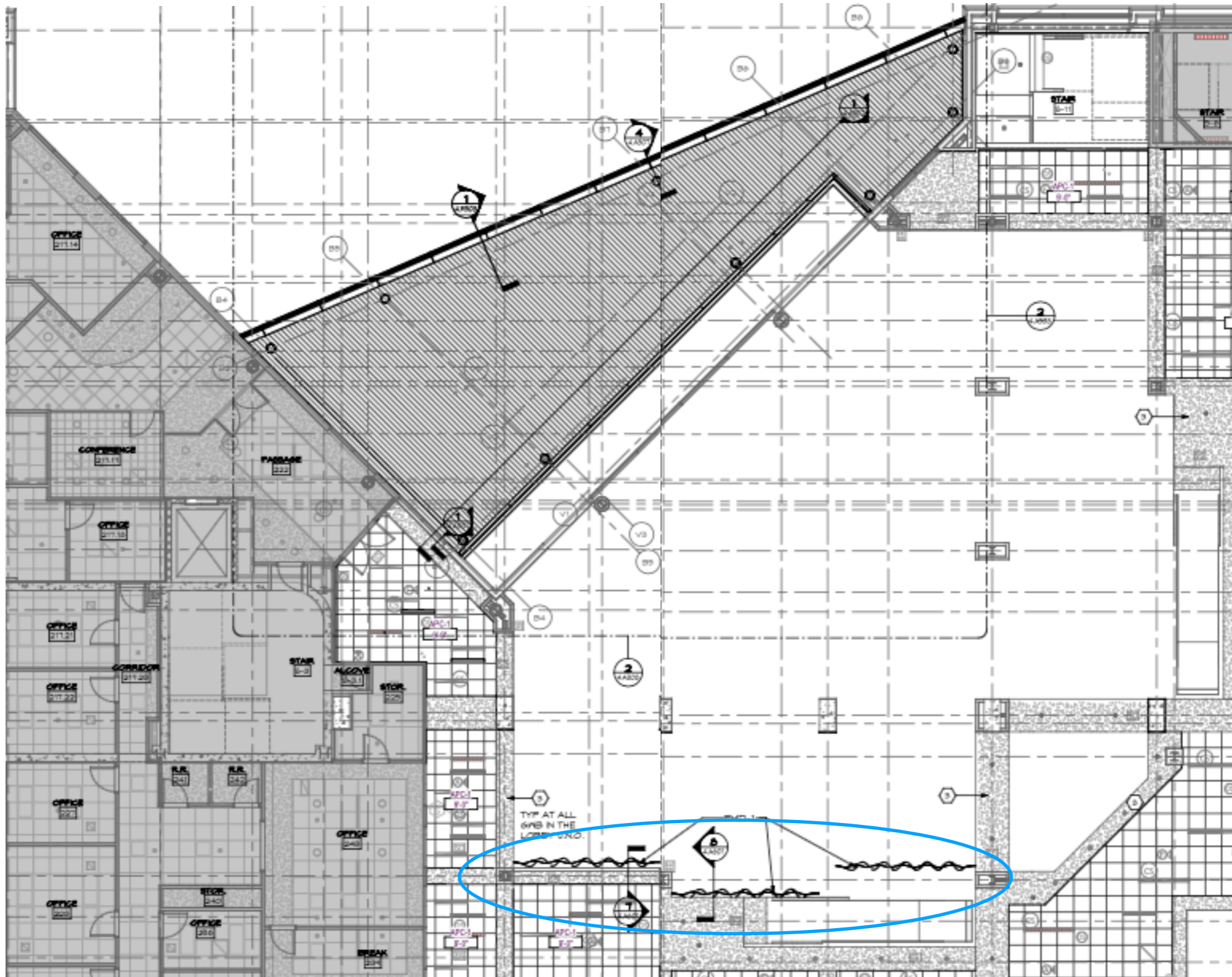
Location of Skylight

Reflective Ceiling plan



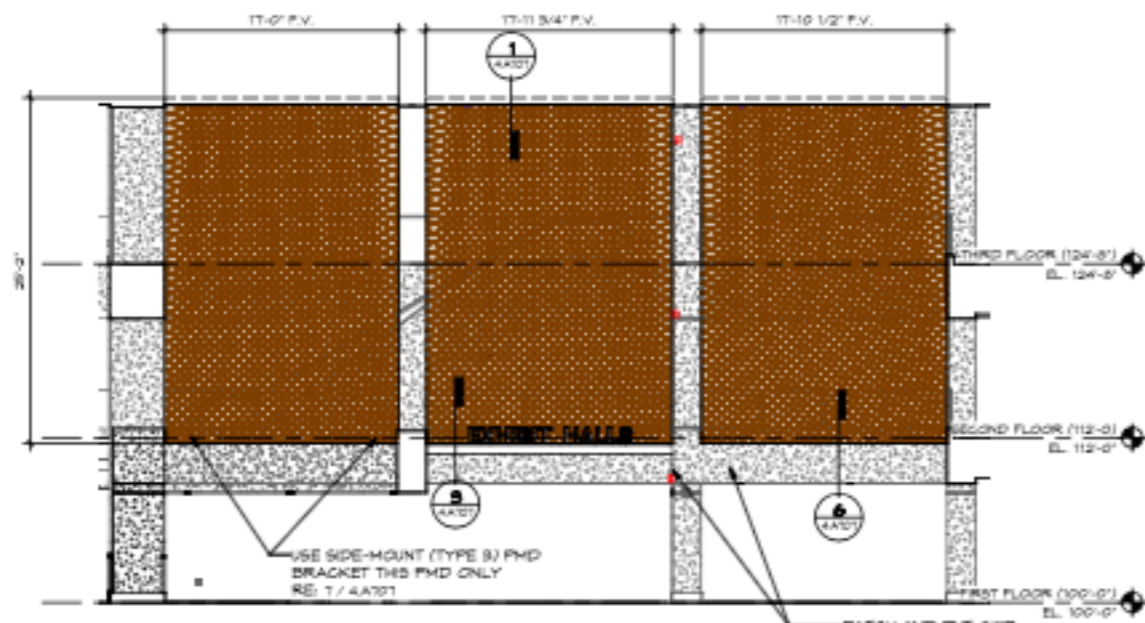
Location of soffit for installation

Reflective Ceiling plan



Location of Polycarbonate Mesh Drapery

Third floor

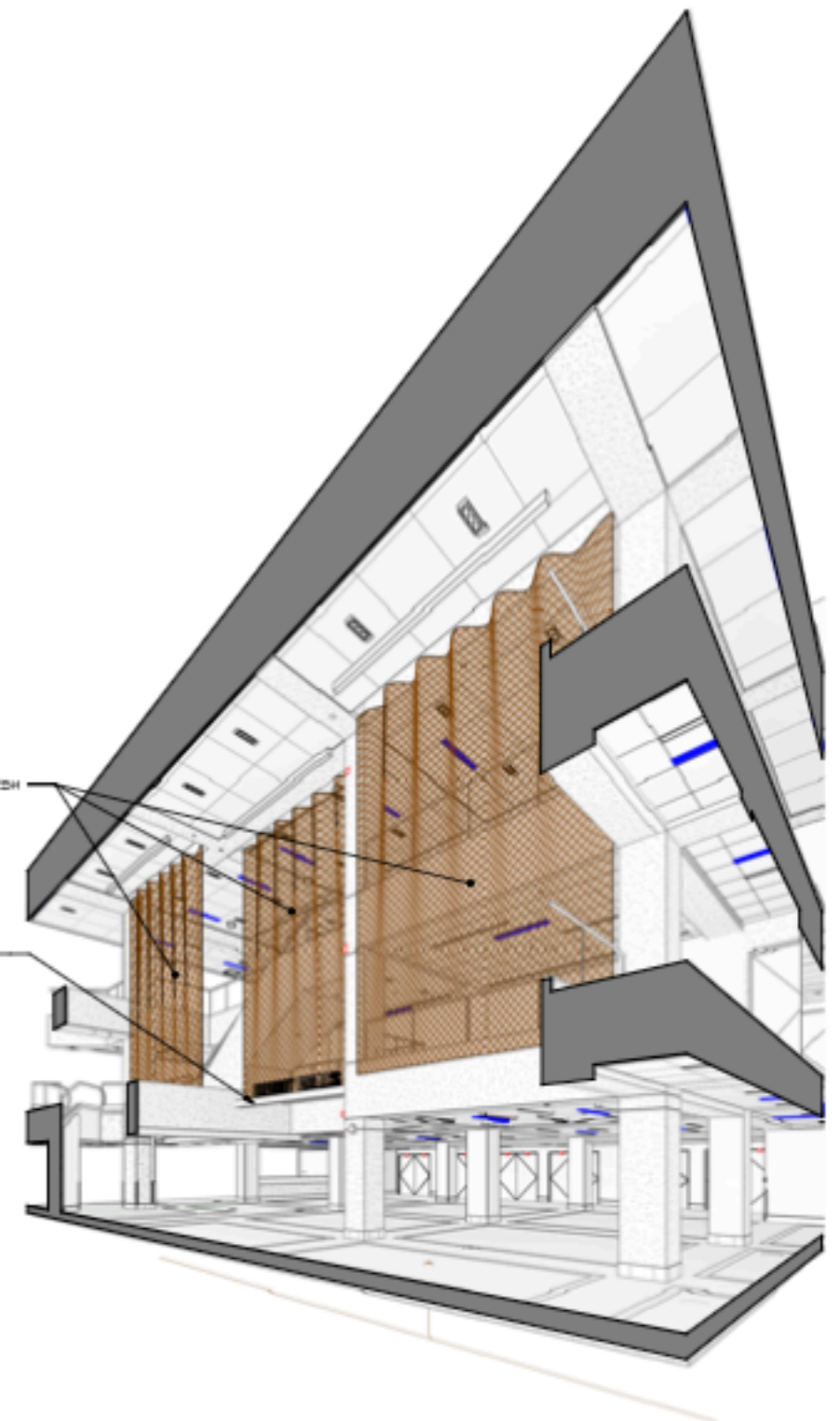


4 LOBBY - POLYCARBONATE MESH DRAPERY
SCALE: 1/8" = 1'-0"

11
12
13
14

POLYCARBONATE MESH
DRAPERY (PMD-1).

STEEL HSS SIGN
SUPPORT - FINISH TO
MATCH FNT-12



10 LOBBY - POLYCARB. MESH DRAPERY (PMD)
SCALE: N.T.S.