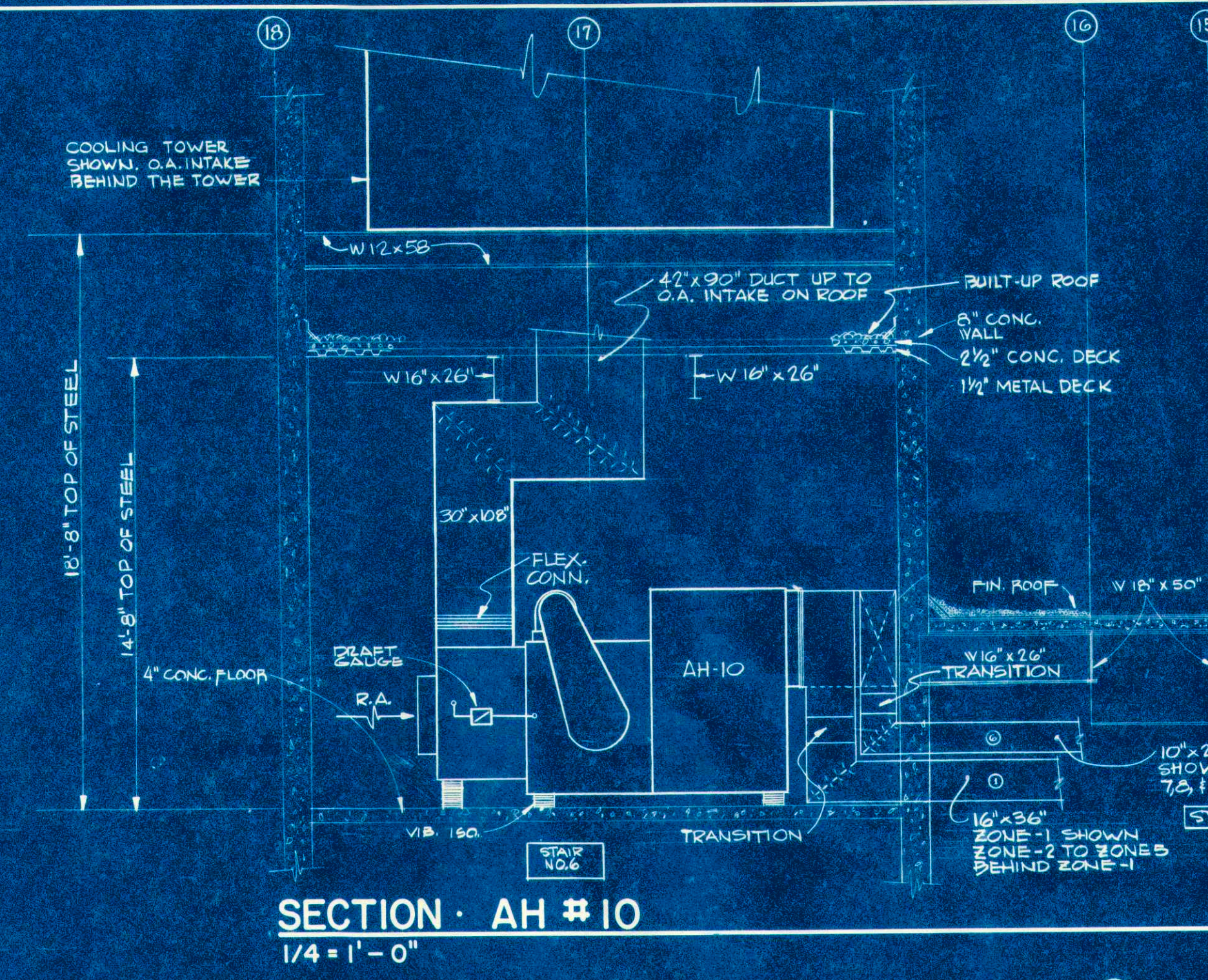


SECTION · AH#8  
1/4" = 1'-0"

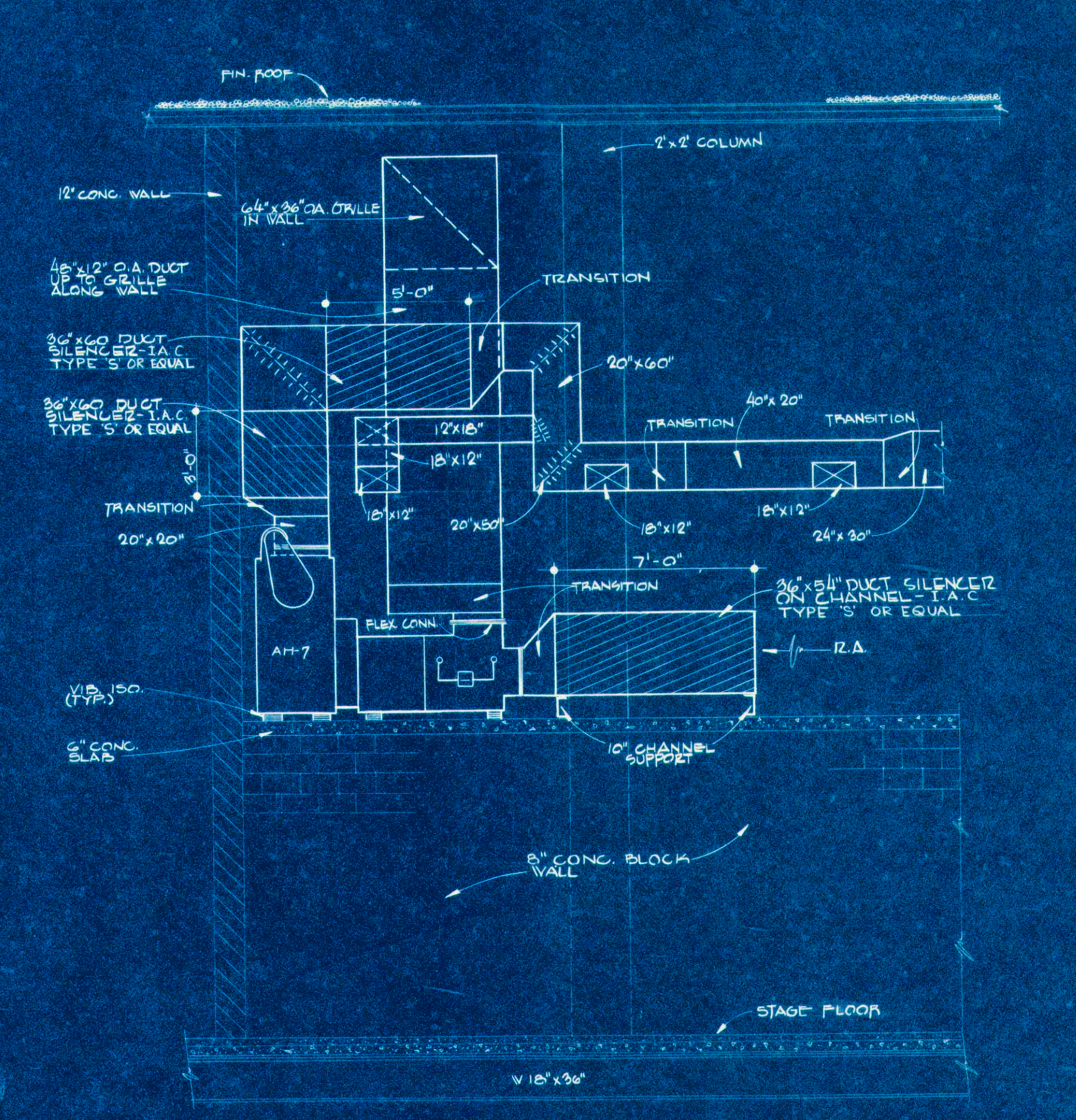
4  
M-9/M-9



SECTION · AH#10  
1/4" = 1'-0"

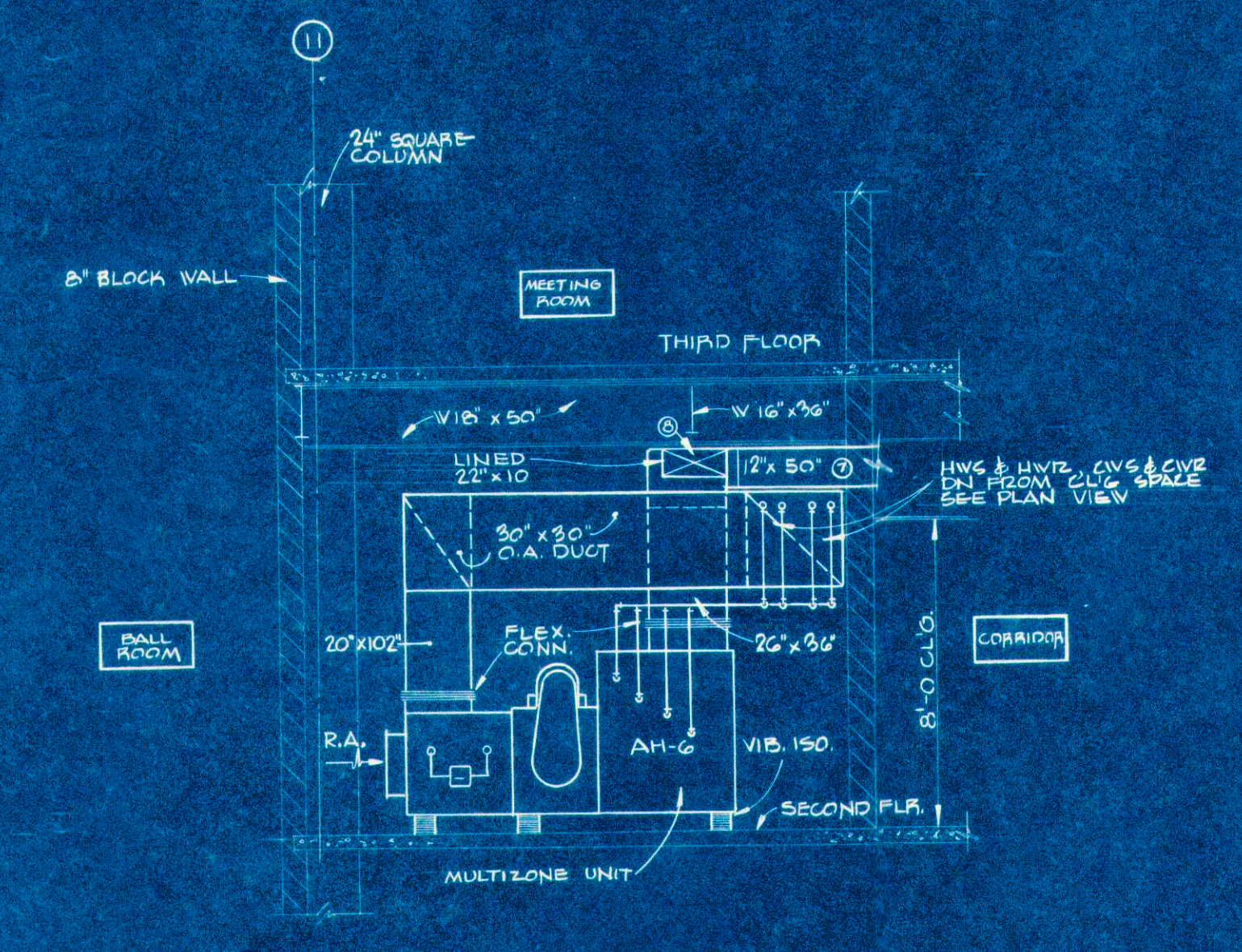
ZONE TABLE AH-10	
ZONE NO.	ZONE CFM
1	4400
2	1000
3	4400
4	1000
5	1000
6	1600
7	1300
8	1300
9	1300
TOTAL	17,400

11  
M-7/M-9



SECTION · AH#7  
1/4" = 1'-0"

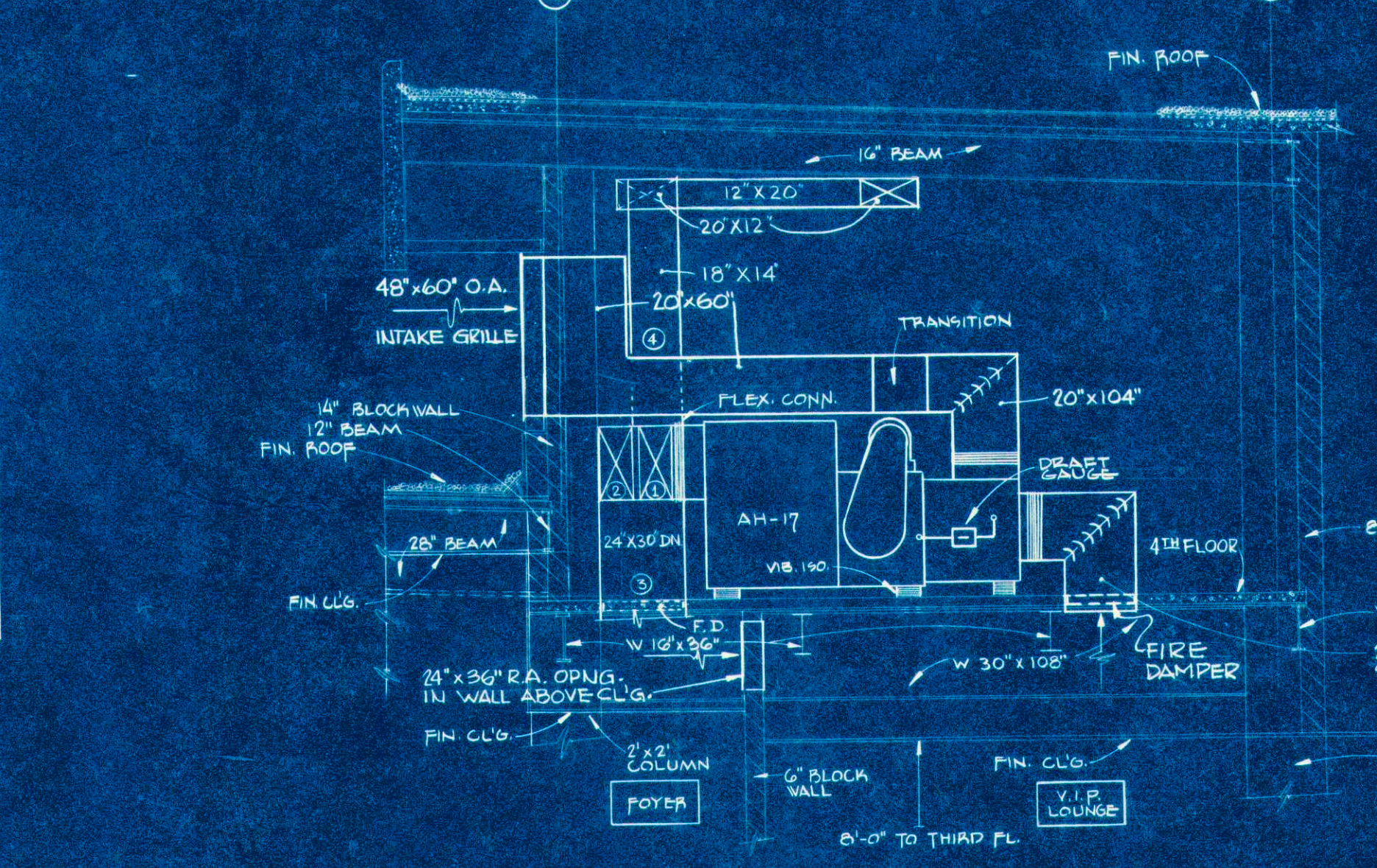
6  
M-5/M-9



SECTION · AH#6  
1/4" = 1'-0"

ZONE TABLE AH-6	
ZONE NO.	ZONE CFM
1	2500
2	1200
3	600
4	1200
5	800
6	800
7	1500
8	600
TOTAL	9200

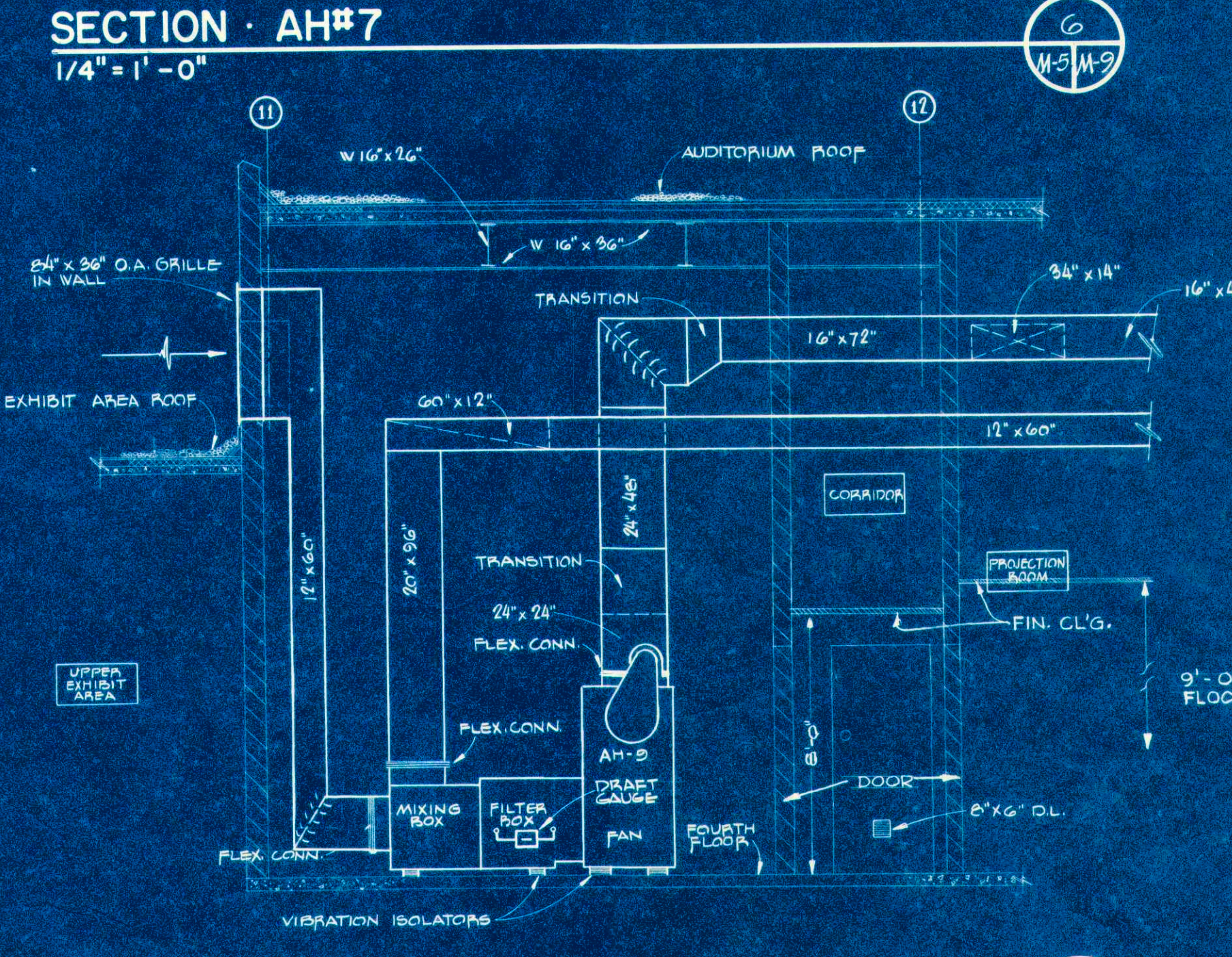
5  
M-4/M-9



SECTION · AH#17  
1/4" = 1'-0"

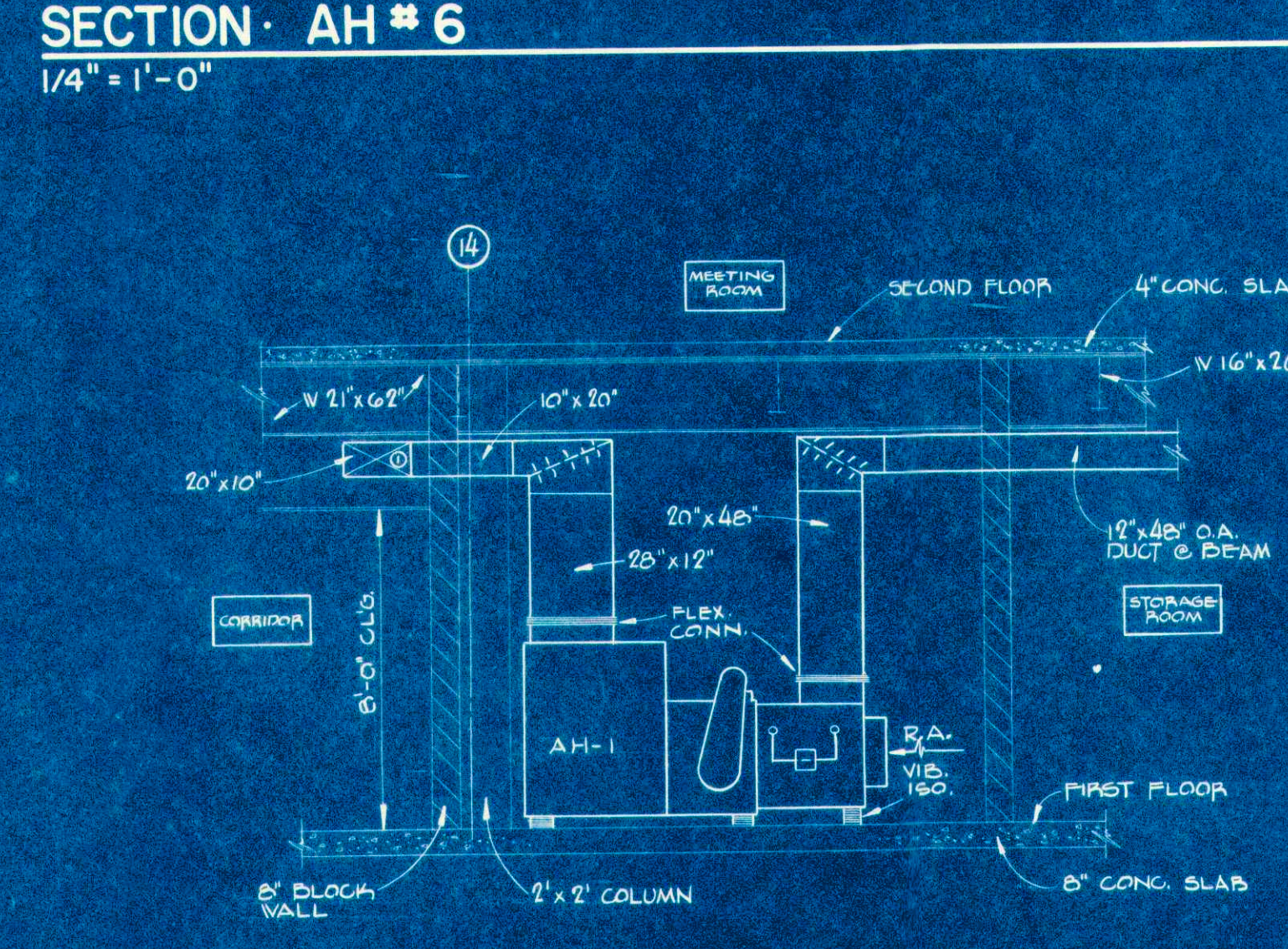
ZONE TABLE AH-17	
ZONE NO.	ZONE CFM
1	1500
2	1500
3	7100
4	2400
TOTAL	12,500

9  
M-7/M-9



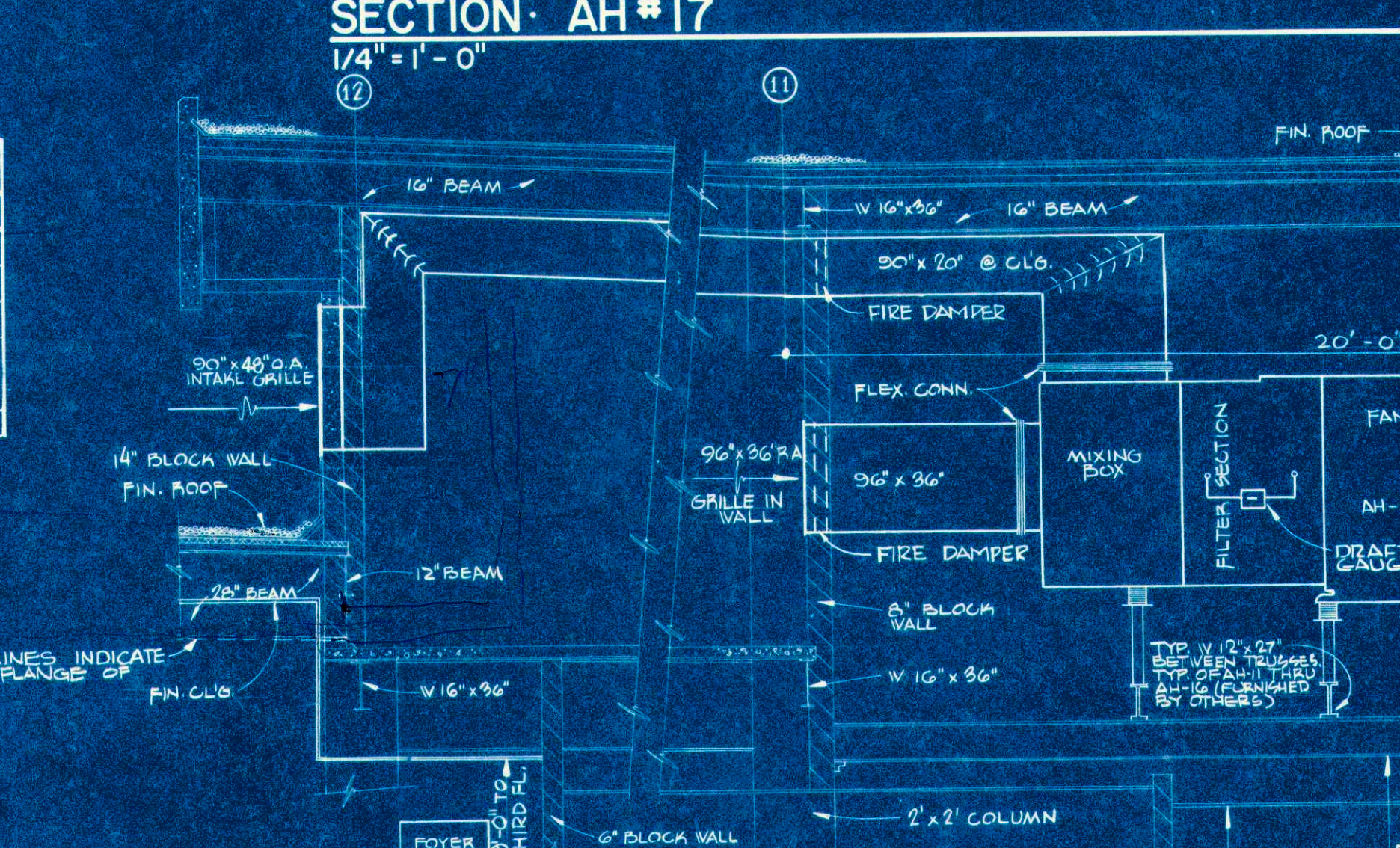
SECTION · AH#9  
1/4" = 1'-0"

8  
M-7/M-9



SECTION · AH#1  
1/4" = 1'-0"

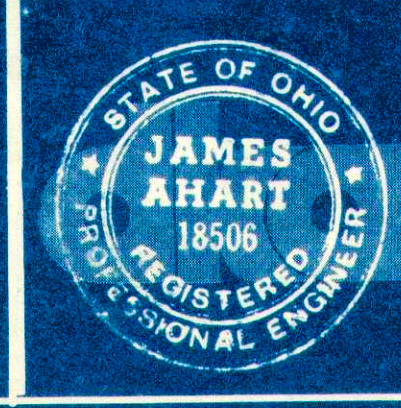
1  
M-2/M-9



SECTION · AH#14  
1/4" = 1'-0"

12  
M-8/M-9

NOTE: AH-14 BETWEEN COL. LINES M-11 & M-12 SHOWN. AH UNITS 1 THROUGH 16 TO BE INSTALLED IN SIMILAR WAY SEE 1/8" SCALE PLANS FOR DETAIL OF EACH UNIT.



**DENEAU, KLESKI & ASSOCIATES ARCHITECTS**  
40 W. FOURTH ST. - SUITE 2100 - DAYTON, OHIO

**DAYTON EXHIBITION CENTER**  
FIFTH AND MAIN STREETS  
DAYTON, OHIO

REVISIONS			
NO.	DATE	BY	DESCRIPTION

DRAWN BY	DATE	COMM. NO.	SHEET NO.
SDC and LBS	11.12.70	68007	M-9
CHECKED BY	DATE	PRINT DATE	
TJF	11.13.70	Dec. 3, 1970	