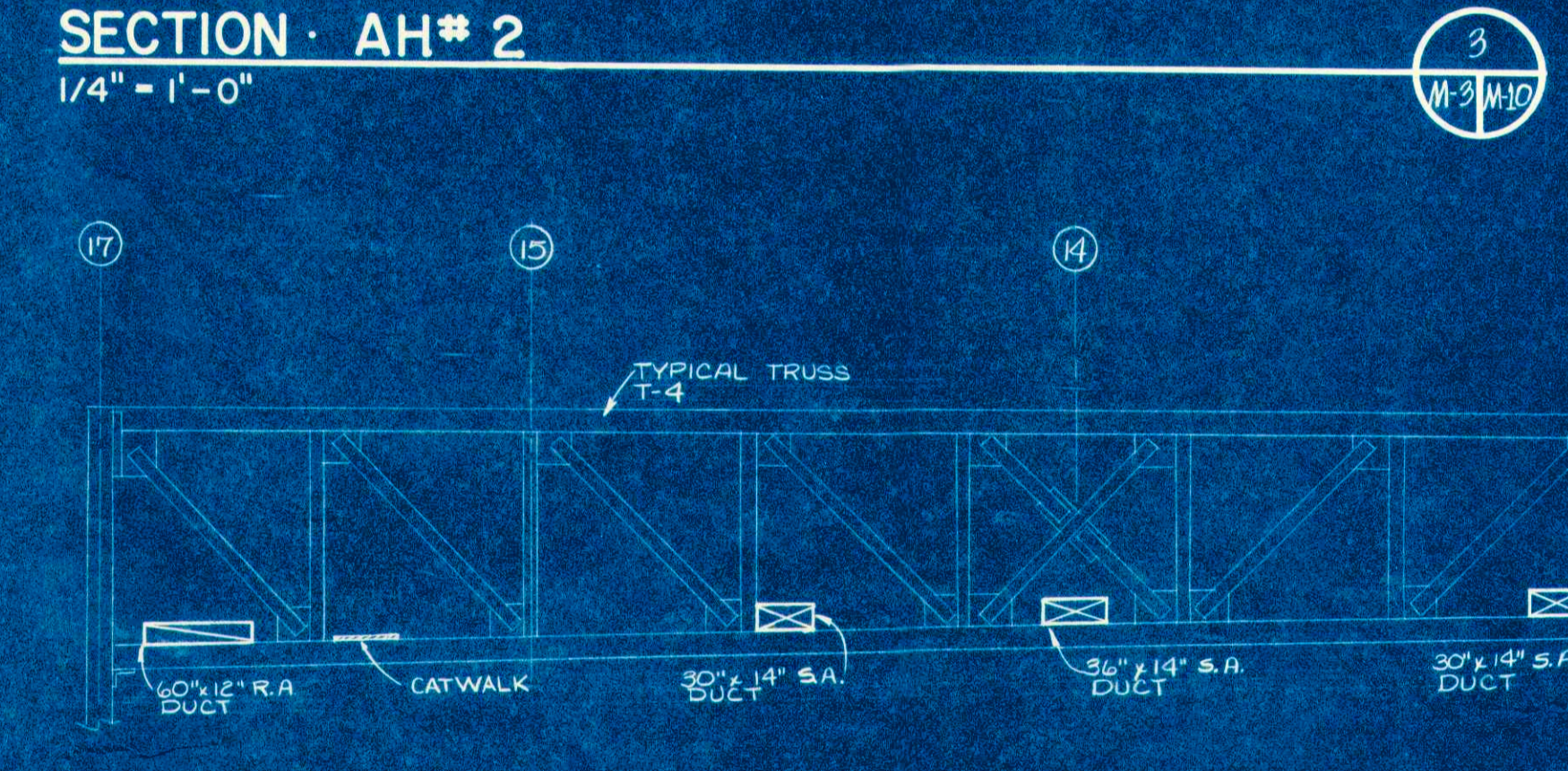
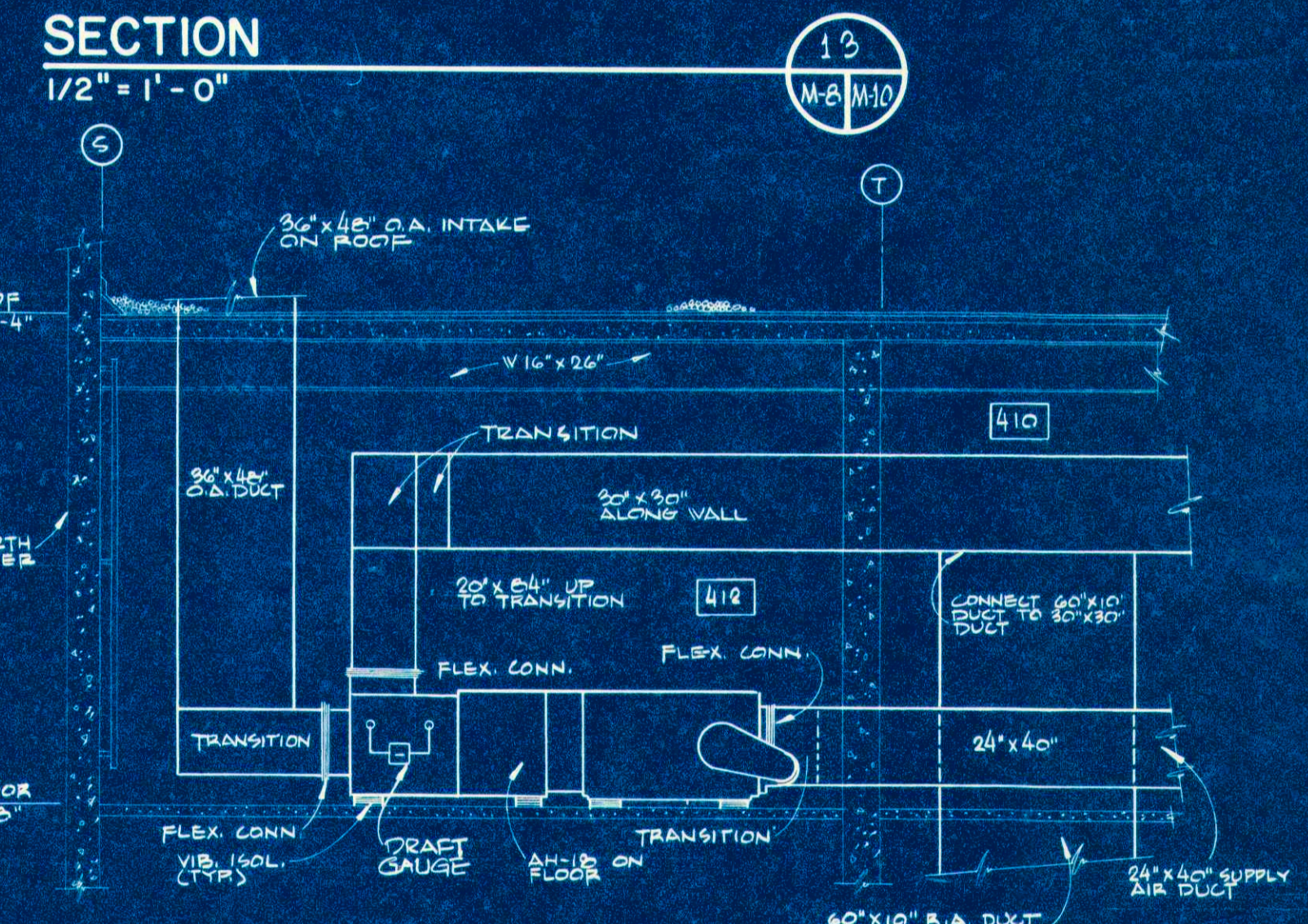


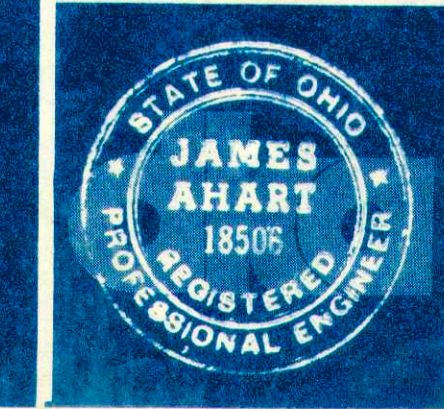
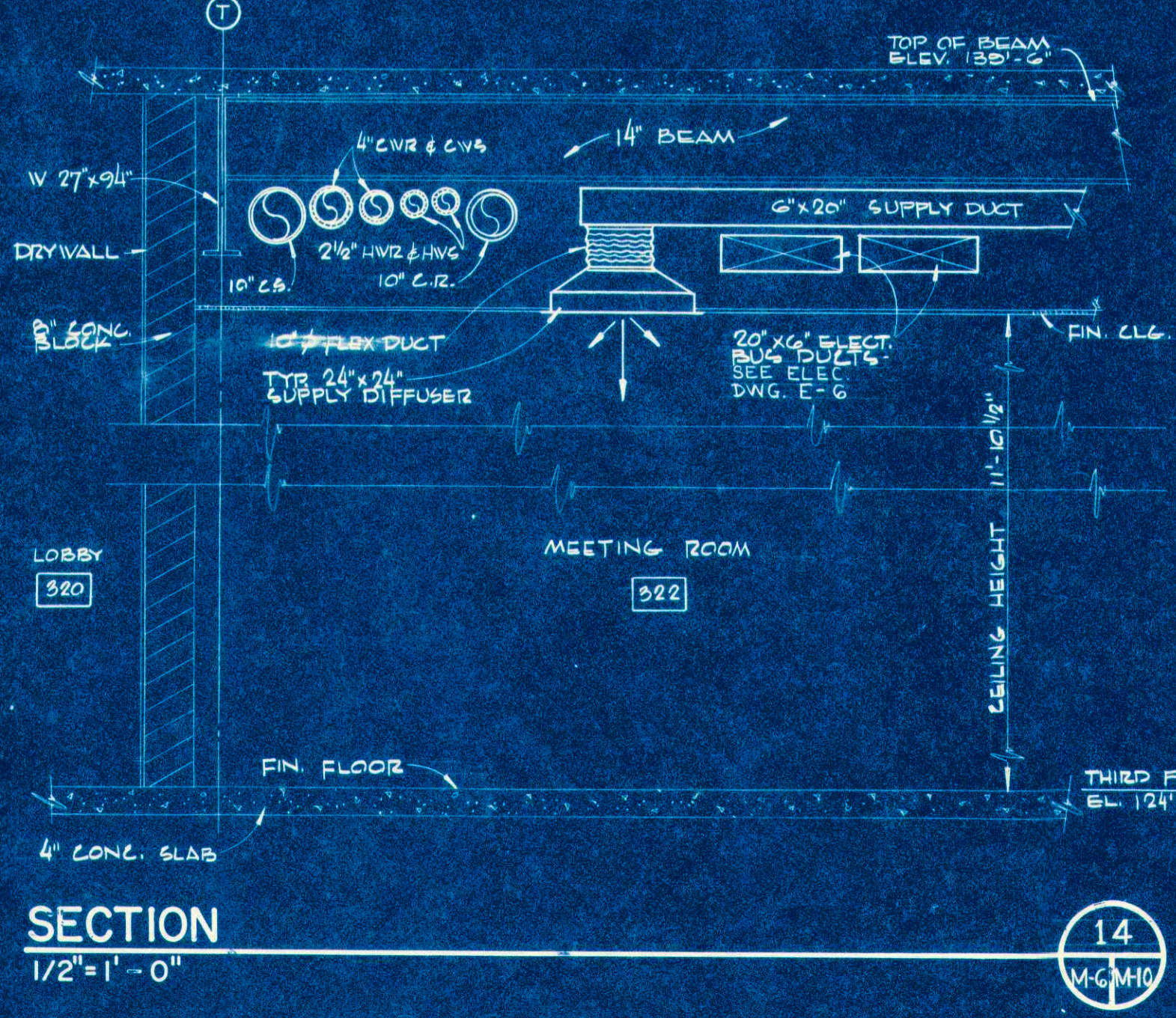
**EQUIPMENT NOTES - MECHANICAL**

1. CENTRIFUGAL WATER CHILLER - TWO REQ'D - EVAPORATORS CONNECTED IN SERIES - CONDENSER 1200 GPM. 1200 GPM OF CONDENSER WATER @ 85° ENTERING, 85° LEAVING VIA 2" COILS. CHILLER #1 MAX. PRESS. DROP OF 11 FT. EA. CHILLER #2 MAX. PRESS. DROP OF 11 FT. EA. CHILLER #1 150° EWT. 200 TON. CHILLER #2 140° EWT. 200 TON. CHILLER #1 MAX. PRESS. DROP OF 11 FT. EA. CHILLER #2 MAX. PRESS. DROP OF 11 FT. EA. CHILLER #1 150° EWT. 200 TON. CHILLER #2 140° EWT. 200 TON. CHILLER #1 MAX. PRESS. DROP OF 11 FT. EA. CHILLER #2 MAX. PRESS. DROP OF 11 FT. EA. CHILLER #1 150° EWT. 200 TON. CHILLER #2 140° EWT. 200 TON. CHILLER #1 MAX. PRESS. DROP OF 11 FT. EA. CHILLER #2 MAX. PRESS. DROP OF 11 FT. EA. CHILLER #1 150° EWT. 200 TON. CHILLER #2 140° EWT. 200 TON. CHILLER #1 MAX. PRESS. DROP OF 11 FT. EA. CHILLER #2 MAX. PRESS. DROP OF 11 FT. EA. CHILLER #1 150° EWT. 200 TON. CHILLER #2 140° EWT. 200 TON.
2. HOT WATER GENERATORS - TWO REQ'D - EACH HWS SHALL BE FLEXIBLE TUBE TYPE W/ 1500 GPM BTU/HR. INPUT & 1000 GPM BTU/HR. OUTPUT W/ ATMOSPHERIC BURNER, TWO 2" STAGES, GAS VALVES, ELECTRONIC SAFETY CONTROLS E.M. APPROVED. HIGH LIMIT, AQUASTAT, OPERATING ADJUSTING, GAS REGULATOR FOR 1# GAS, LOW WATER CUT-OFF 125 PSI OPERATING PRESSURE.
3. COOLING TOWER - DRAFT TYPE 2550 GPM FROM 85° F TO 85° F @ 75° WB. MAXIMUM DIMENSIONS SHALL BE 16'-6" WIDE X 20'-6" HIGH. DRAIN BASIN SHALL BE DRY & DRAIN INTO AN INDOOR TANK. PROPELLER TYPE FAN 1/40 HP 480/3/60 MOTOR, ACCESS LADDER.
4. AIR CONDITIONING UNIT - THRU WALL TYPE 47,000 BTU/HR COOLING @ 95° OUTSIDE AIR 90° EWT. 1600 CFM @ 3" STAT. G. PRESSURE 1/2 HP. 2400 RPM. 480/3/60 125 FULL LOAD AMPS. HOT WATER HEAT COIL 71,200 BTU/HR @ 205° EWT. 4" ΔT. 70° DB ENT. AIR. IN DUCT = 24" X 12". COMPLETE W/ OUTDOOR INLET GRILLE 50" X 30", FILTERS, ETC.
5. CHEMICAL FEED PUMP - DUPLEX @ 0.420 GAL PER DAY @ 100 PSI, 1/2 HP, 115/1/60 COMPLETE W/ OVERLOAD PROTECTION.
6. RADIATION - WALL TYPE - FLAT TOP & TOP OUTLET W/ END CAPS & DAMPERS, 1 1/4" PIPE, 1600 BTU/HR @ 200° AVG. WATER TEMP. & 65° EAT. COVER HEIGHT 16" INSTALLED 4" OFF FLOOR.
7. SUPPLY ALL STRUCTURAL STEEL BRACING REQUIRED FOR ALL EQUIPMENT UNLESS INDICATED ON STRUCTURAL DRAWINGS.
8. RELIEF VENT (RV-1) - ROOF TYPE W/ 15 3/8" Ø STRUCTURAL GAINING 135 SF OF OPEN AREA COMPLETE WITH 14" SQUARE BACKDRAFT DAMPER, JENN. AIR OR EQUAL.



**LEGEND - MECHANICAL**

G	GAS	Φ	THERMOMETER
CWS	CHILLED WATER SUPPLY	⊕	FLOW SWITCH
CWR	CHILLED WATER RETURN	⊖	UNION
CS	CONDENSER WATER SUPPLY	— —	FLEXIBLE CONNECTION
CR	CONDENSER WATER RETURN	— —	GLOBE VALVE
HWS	HOT WATER SUPPLY	— —	FLOW CONTROL VALVE
HWR	HOT WATER RETURN	— —	CHECK VALVE
	GATE VALVE	⊕	3-WAY CONTROL VALVE
⊕	BUTTERFLY VALVE	⊕	(CHECK CONTROL SYSTEMS)
⊖	BALANCING VALVE	⊕	PNEUMATIC THERMOSTAT
⊕	HOSE BIBB TYPE DRAIN	⊕	ELECTRIC THERMOSTAT
⊕	MANUAL VENT	⊕	FLOW INDICATOR
⊕	PRESSURE REDUCING VALVE	⊕	FIRE DAMPER
⊕	STRAINER	⊕	
⊕	PRESSURE GAUGE	⊕	



<b>DENEAU, KLESKI &amp; ASSOCIATES ARCHITECTS</b>		<b>DAYTON EXHIBITION CENTER</b>	
40 W. FOURTH ST. - SUITE 2100 - DAYTON, OHIO		FIFTH AND MAIN STREETS DAYTON OHIO	
REVISIONS			
NO.	DATE	BY	DESCRIPTION
1	11.12.70	SDG	COND. PS
2	11.13.70	TJF	DEC. 3, 1970
DRAWN BY		DATE	COMM. NO.
CHECKED BY		DATE	PRINT DATE
			<b>M-10</b>